



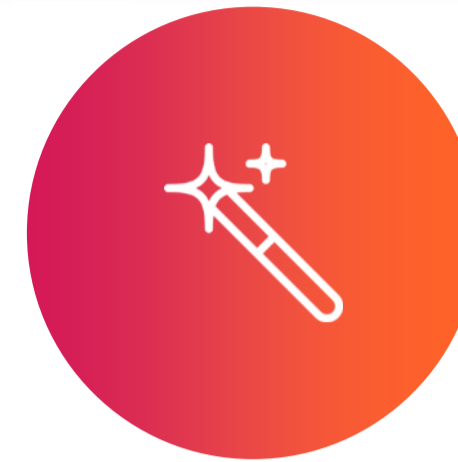
HITACHI YOUNG LEADERS INITIATIVE 2019

Digital Transformation for a
Sustainable Future

.....
HITACHI ASIA LTD.

What is HYLI

Selection Process



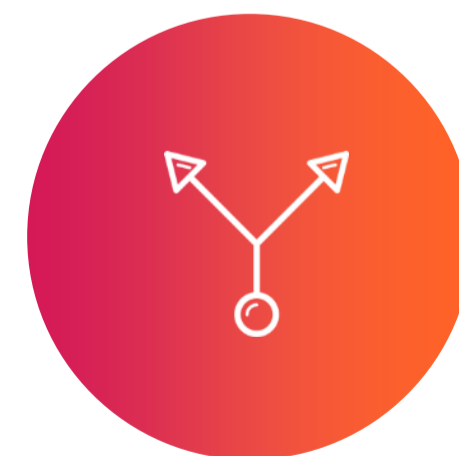
Enhance the perception and
Understanding of regional
and global issues



Encourage Asian
solidarity



Promote cross-cultural
bonding through education,
interaction and shared
experiences



Create a platform for
exchange of views from
diverse perspectives



Build a network of
future Asian leaders

Schedule

DAY	DAY 0 (Mon 8 th July)	DAY 1 (Tue 9 th July)	DAY 2 (Wed 10 th July)	DAY 3 (Thu 11 th July)	DAY 4 (Fri 12 th July)	DAY 5 (Sat 13 th July)
AM	Student Arrival	Conference Speeches Panel Discussion	Visits	Field Activity	Student Presentation	Student Departure
PM	Orientation	Conference Speeches Panel Discussion	Workshop	Workshop	Closing Ceremony	
Evening	Welcome Dinner	Dinner	Dinner	Dinner	Cultural Night	

Schedule



**Digital
Transformation
for a Sustainable
Future**



**July 9-12
2019**



Singapore



**7 Southeast Asian
countries and Japan**

Key Highlight of Last HYLI – Yangon, Myanmar – July 2017 (1)



Panel
Discussion



Interaction
with
speakers



Yangon City
hall visit



UN Habitat
Visit

Key Highlight of Last HYLI – Yangon, Myanmar – July 2017 (2)



Student
Workshop



Student
Presentation



Closing
Ceremony

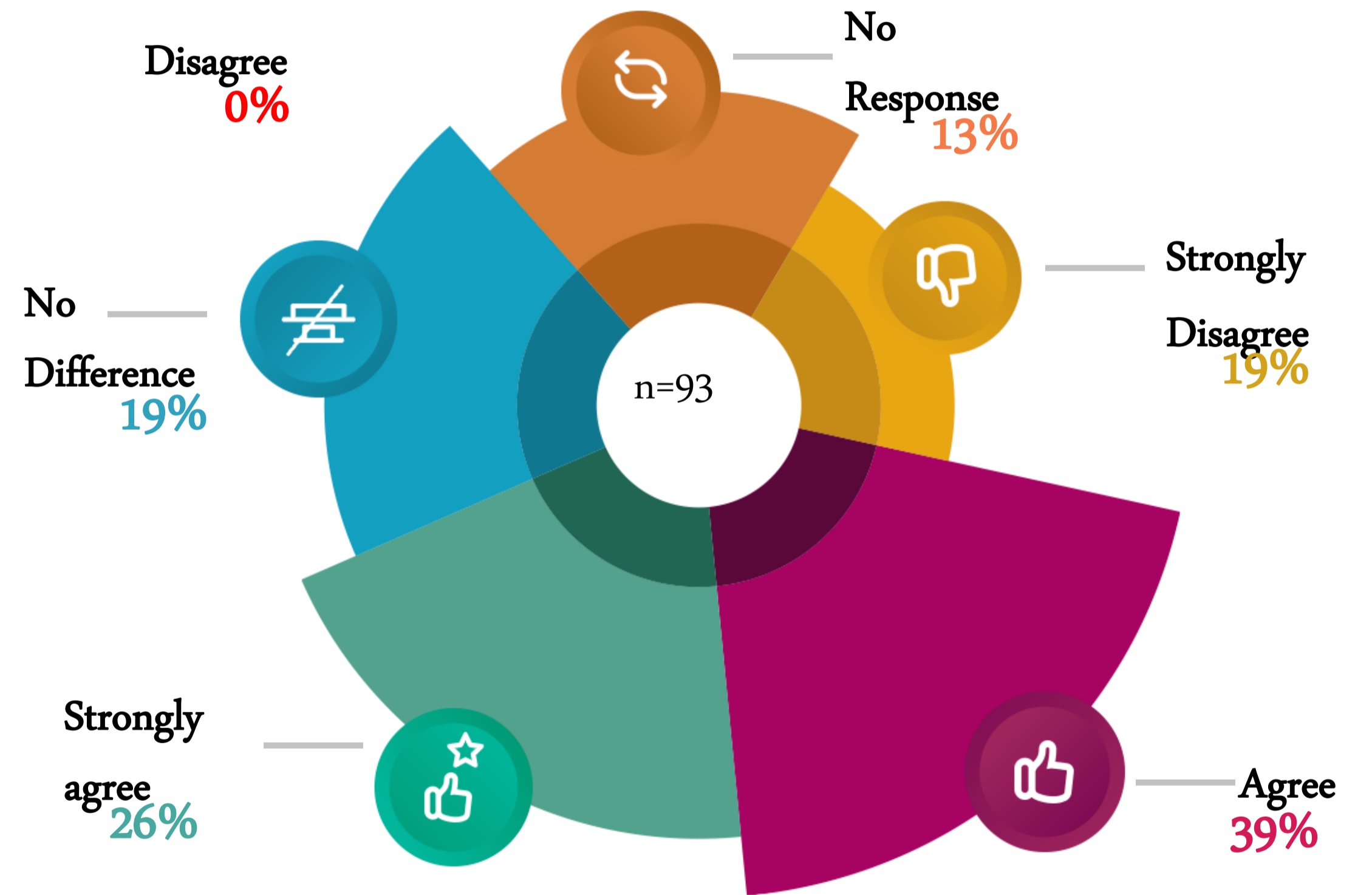


Cultural
Night

HYLI's Impact on Youth Career (1)

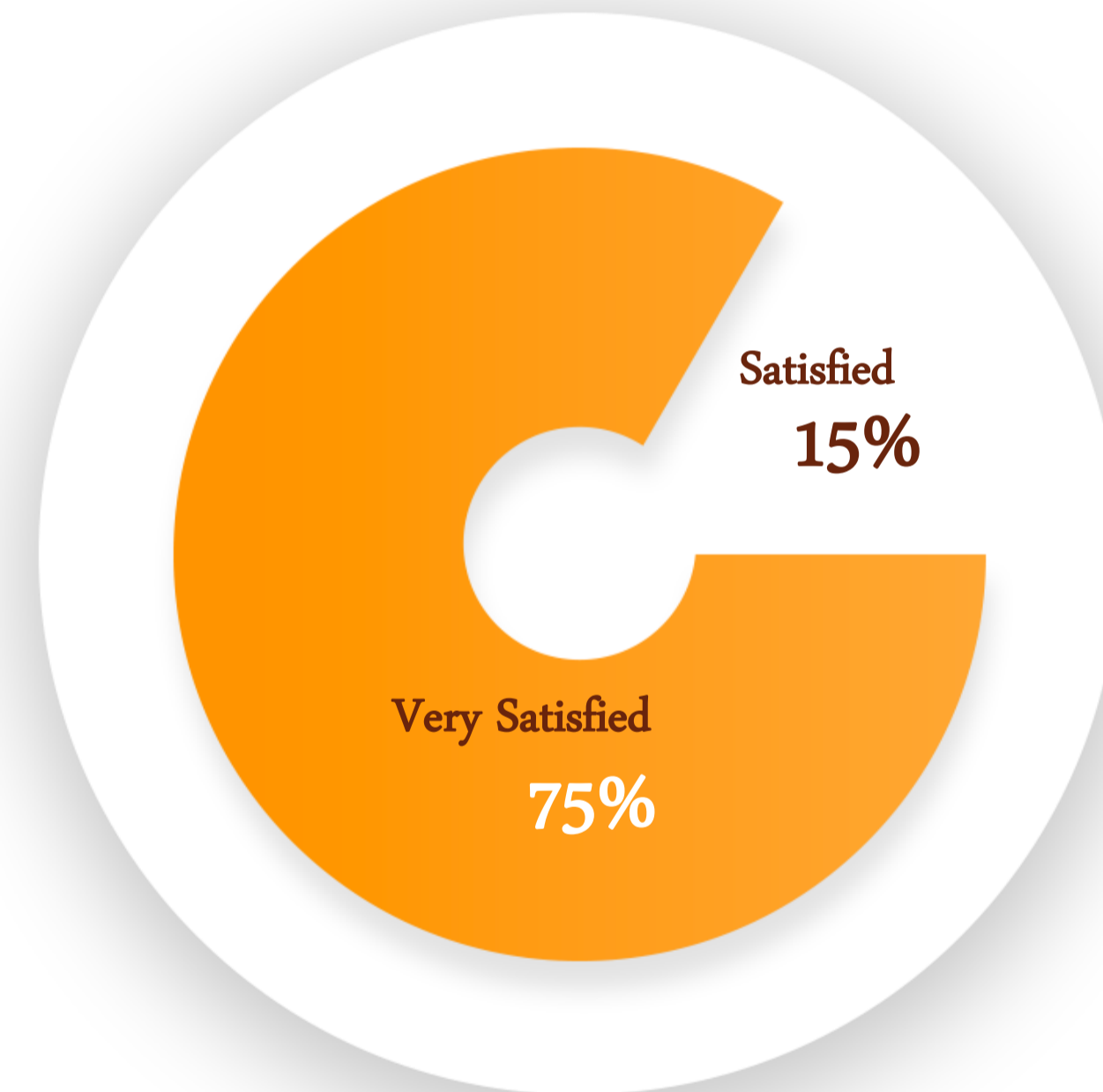
65% of responds think HYLI made impact on their career.

Q. Attendance to HYLI had a significant influence in furthering my career.



All students were satisfied with 14th HYLI experience

Q. Attendance to HYLI had a significant influence in furthering my career.



14th HYLI Student's Feedback



14th HYLI became **unforgettable, life-changing experience**. Now I am eagerly looking forward to contribute to South-east Asian sustainable development from a private sector as a responsible Asian citizen.



HYLI is the effective program for future leaders and I want to share my experience to the young leaders how HYLI changed my ways of perception.



I met many like-minded individuals/peers and it was a **very eye-opening experience**. The student mentors and Hitachi staff also came from diverse backgrounds and inspired me to go back to my country to continue contributing to society in my own way.”

Why Hitachi Young Leaders Initiative?

Develop leadership

Students have the opportunity to broaden their understanding, perceptions & perspectives of current affairs impacting Asia and the world.

Unlock your potential

HYLI challenges students to fine tune their leadership, public speaking, teamwork, presentation & interpersonal skills to help them push their limits and unlock their true potential.

Build relationships

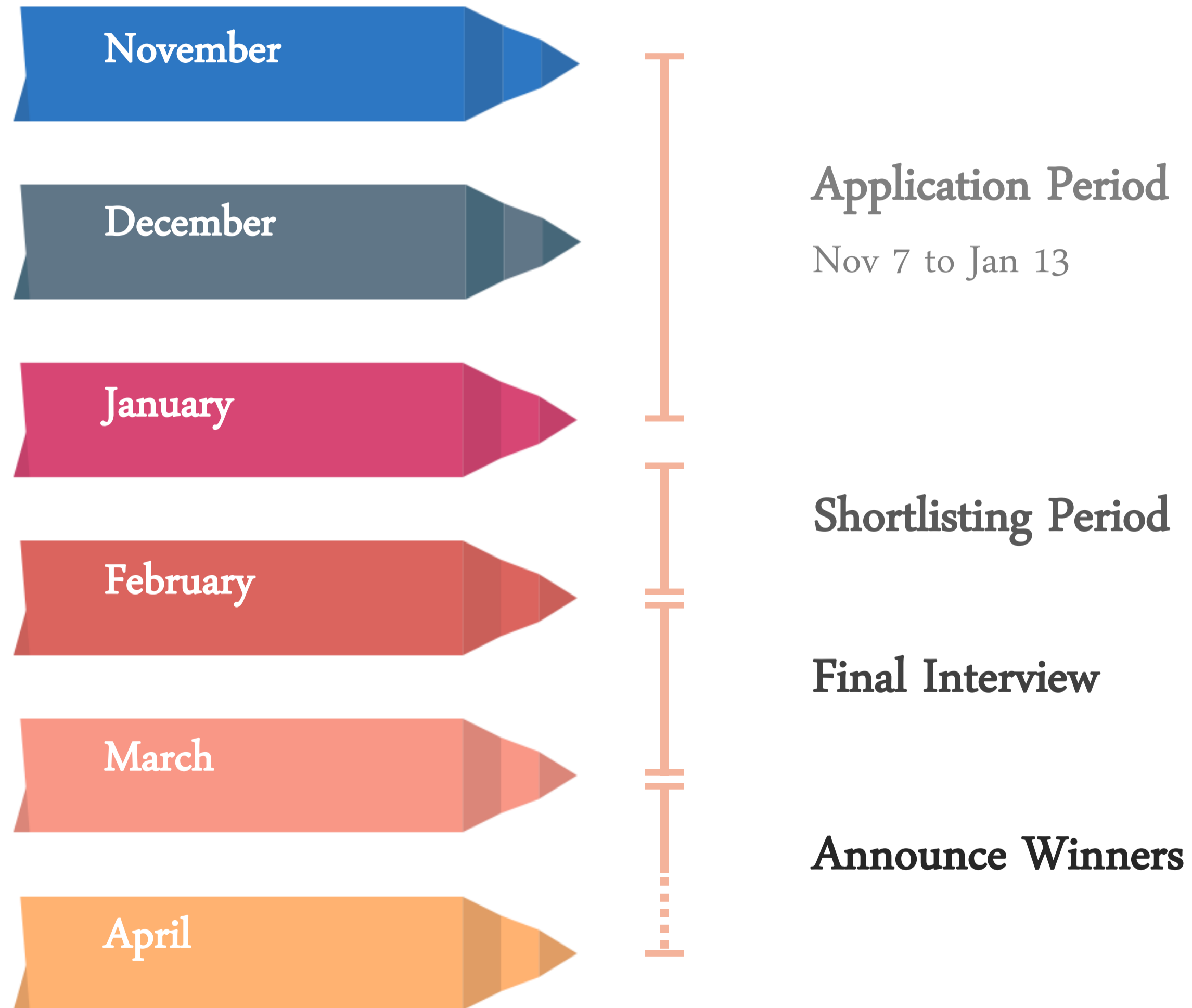
HYLI brings high-calibre students a chance to network with influential government officials, prominent business leaders, academics & NGO representatives to make connections that matter.

Embrace diversity

HYLI is a fantastic journey of youths where students can gain valuable experience in solving regional and global issues in a truly multicultural environment. Students get to share their cross cultural experience with counterparts from Indonesia, Japan, Malaysia, Myanmar, Philippines, Singapore, Thailand and Vietnam

Application Details and Selection Process

Selection Process



Application Basic Criteria

- You are a full-time undergraduate or graduate student from a school/university in any of these countries: Indonesia, Japan, Malaysia, Myanmar, Philippines, Singapore, Thailand and Vietnam⁽¹⁾
- You will remain as a full-time undergraduate or graduate student until completion of the HYLI 2019 event
- You have the passion and capability to represent youth and a track record of established connection with the country you choose to represent⁽²⁾
- You demonstrate high academic standing⁽³⁾
- You have a leadership track record in your school or community
- You have a keen interest in HYLI 2019 theme
- You have good overall command of English⁽⁴⁾

(1) Participants of past HYLI programs (i.e. HYLI alumni) are not eligible to apply

(2) As an example, if you are applying from a school/university in Indonesia, your application should demonstrate your capability to represent the interests of Indonesia and its youth.

(3) Reference: CGPA/GPA of 3.0 out of 4 (CAP of 3.5 out of 5 or equivalent)

(4) English comprehension, speaking, and writing

Application Form Points



PERSONAL PARTICULARS

Name, contacts and others



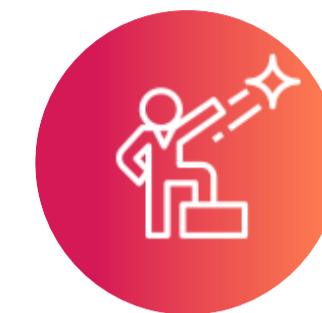
EDUCATIONAL INFORMATION

Your University and
Degree, Overall academic standing



ENGLISH LANGUAGE PROFICIENCY

TOEFL/IELTS/TOEIC
or equivalent record



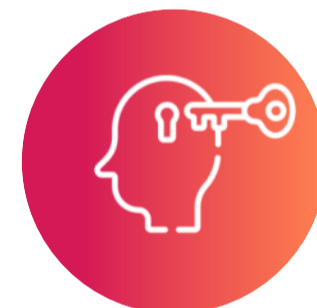
CONTRIBUTION, SERVICE, ACHIEVEMENT

Top three experiences
(up to 150 words each)



PASSIONS, PERSONALITY, GOALS

- I am passionate about
- The three traits...
- Ten (10) years from now, I will....



MOTIVATIONS

Two Short Essays
(up to 200 words each)



RECOMMENDATION

Recommendation from a referee (up to 3)
who supports your application (Optional)



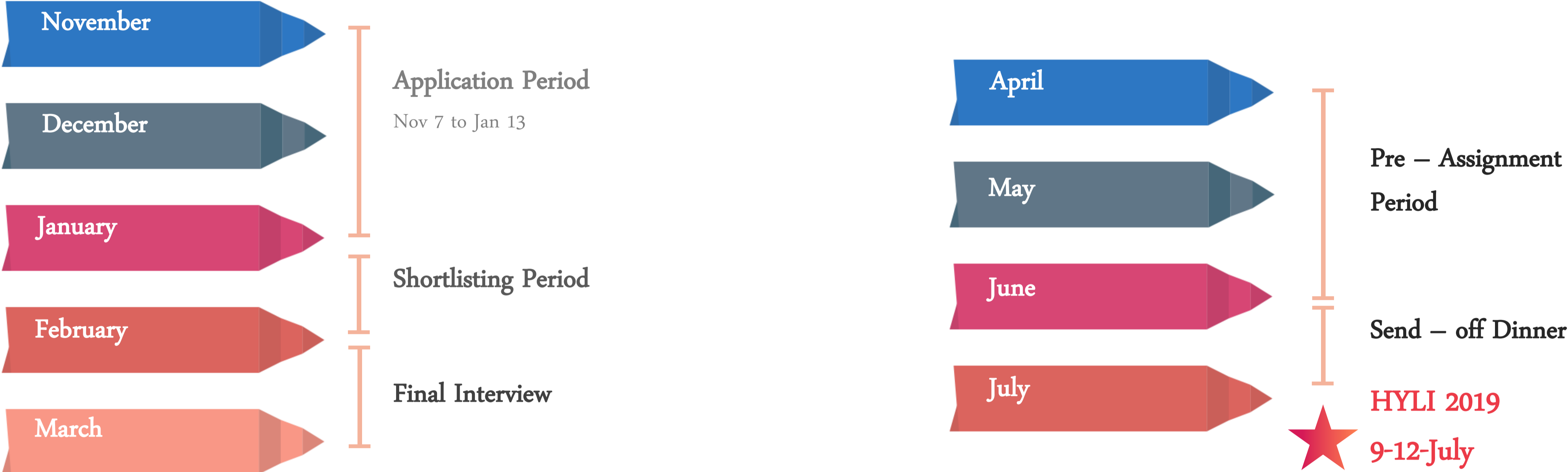
DECLARATION

Our commitment to protect applicants' data and
other legal considerations



Project Schedule

Whole Project Schedule



Note: Except for application period, specific dates may vary per country.

Requests



HITACHI
Inspire the Next

Hitachi Young Leaders Initiative 2019

**DIGITAL
TRANSFORMATION
FOR A SUSTAINABLE
FUTURE**

HYLI

As part of Hitachi's vision of fulfilling its commitment to society, Hitachi Young Leader Initiatives (HYLI) is a biennial community relations program that helps build future generations, through innovation education. It seeks to identify and nurture potential Asian leaders among the best and brightest students in Asia, bringing them together to discuss regional and global issues with influential government officials, prominent business leaders, academics, and NGO representatives.

BE A YOUNG LEADER NOW!

Roundtrip airfare, hotel accommodation and meals will be sponsored by Hitachi.

LEARN **CONNECT** **APPLY**

 [Hitachi/YoungLeadersInitiative](#)  [BYLI/AboutHYLI](#)  [BYLI/ApplyHYLI](#)

9 - 12 JUL 2019 **SINGAPORE**

Please encourage students
to apply to the HYLI



HYLI Website

<http://www.hitachi.com.sg/about/hitachi/activities/hyli/index.html>



HYLI Facebook Page

<https://www.facebook.com/HitachiYoungLeadersInitiative/>



HYLI Application Form

[Bit.ly/ApplyHYLI](https://bit.ly/ApplyHYLI)

If you have any questions, feel Free
to ask the contact person below.

Weber Shandwick Indonesia

Gracea Witjitra

Tel: 0818 0900 0392 / Mail: GWitjitra@webershandwick.com

or

Patricia Saputra

Tel: 0812 9106 8322 / Mail: PSaputra@webershandwick.com

HITACHI

Inspire the Next