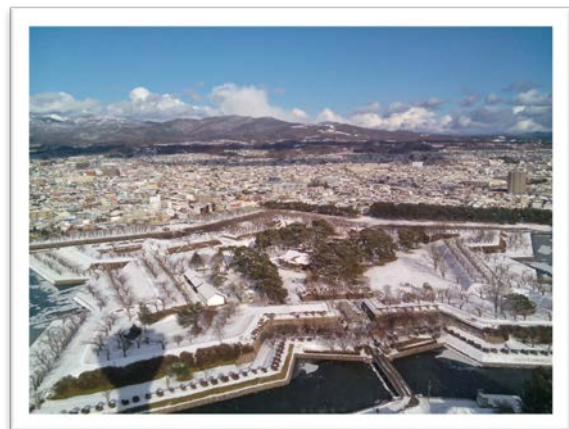


**PARE Program
Graduate Program
for Fostering Frontiers of Practical Solutions
in a Populations-Activities-Resources-Environments (PARE)
Chain**

**Application Guidelines
(Spring School 2020 Admission for PARE Consortium Universities)**



I. PARE Program Outline

This program offers graduate students, especially master degree students, an opportunity to work together with other students majoring in different fields with diverse national and cultural background to find out solutions on a various issues related to sustainable usage of resources and management in the PARE chain (Populations-Activities-Resources-Environments).


ASEAN countries have experienced rapid economic growth in recent economic growth in recent years, resulting in expansion of middle-class populations and residential concentrations in cities. These urbanization phenomena – that is, the concentration of populations and related activities – cause the depletion of fossil fuels, water and land resources as well as the deterioration of environments. This exacerbates food shortages as well as sanitary and nutritional problems among the poor in particular. These worsening conditions result in higher mortality rates, which are then counterbalanced by higher birth rates and further population growth.

As this vicious cycle in PARE (Populations-Activities-Resources-Environments) chain strongly affects the global environment, a broad array of activities must be implemented to instead make it positive. These should cover both rural and urban areas and encompass a variety of sectors including forest conservation and development, waste management, biomass utilization, transportation, renewable energy promotion and energy conservation.

To produce leaders and create a network to tackle these issues, seven (7) universities in Indonesia, Japan and Thailand formed the PARE consortium and started the joint education program, called *Graduate Program for Fostering Frontiers of Practical Solutions in a Populations-Activities-Resources-Environments (PARE) Chain* (“PARE Program”) in October 2013. By this program, it is expected to foster human resources with the four requisites: “Field Research Capacity”, “Cross Cultural Capability”, “Frontier Spirit” and “Problem Solving Competencies” which are essential for practical resolutions in the PARE chain.


PARE consortium universities in Indonesia:

- ✓ *Institut Pertanian Bogor (IPB)*
- ✓ *Institut Teknologi Bandung (ITB)*
- ✓ *Universitas Gadjah Mada (UGM)*




PARE consortium universities in Japan:

- ✓ *Hokkaido University (HU)*



PARE consortium universities in Thailand:

- ✓ *Chulalongkorn University (CU)*
- ✓ *Kasetsart University (KU)*
- ✓ *Thammasat University (TU)*
- ✓ *Mahidol University (MU)*



By enrolling this program, you will obtain the basics of PARE-related issues in a wide range of academic field, such as agriculture, fisheries science, environmental science, engineering and information science.

This program offers graduate school students, especially master program students, the PARE Short Program Completion Course. The PARE Short Program Completion Course provides you opportunities to work with other students majoring in different fields with diverse national and cultural backgrounds to find out solutions to PARE-related issues.

Due to the nature of the program, the language to be used in all educational and research activities will be English.

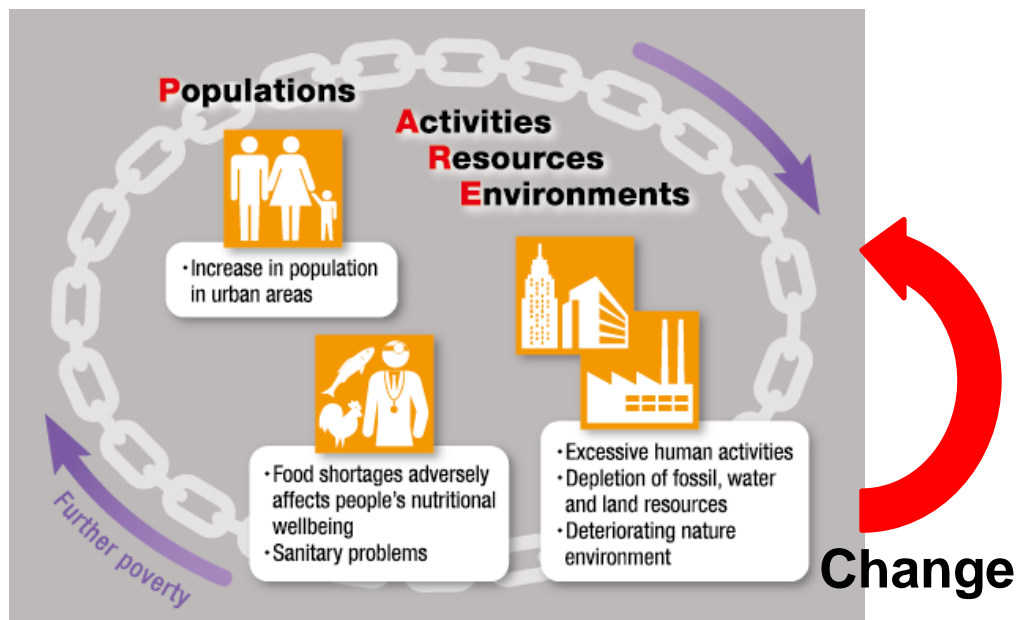
We invite you to take advantages of this opportunity.

What is “PARE”?

Human population growth and excessive human activities cause unprecedented demands of natural resources (fossil, water, land resources, etc.), the intensification of agriculture, the rapidly growing and globalizing economy and urbanization, which contribute to environmental degradation and climate change.

Environmental degradation and climate change also cause insufficient supply of natural resources and food shortages adversely affects people’s nutritional wellbeing.

“PARE” means such linkages among “Population-Activities-Resources-Environment” explained above.





II. Application Guidelines (2020 Spring School admission for Consortium Universities)

Course and Period

PARE Spring School: February 18 – February 29 2020

Venue

Chulalongkorn University, Thailand
(2 nights 3 days field trip to Si Chang Island, Chonburi Province included)

Number of Students

2-4 students/ each consortium university

Qualifications

1. Academic Background

- 1) A student under master’s degree program; and
- 2) A student who has a motivation or willingness and ability to contribute or tackle issues related to the PARE (Populations-Activities-Resources-Environments) in Asia, or who is currently working on research course/project related to the PARE outlook and are interested in pursuing firsthand experience in field works and further expand their knowledge

2. English Ability

- A student who wish to participate in the PARE Program is required to have competent command of spoken and written English, which corresponded to:
 - 1) A TOEIC score of at least 740,
 - 2) TOEFL(PBT,ITP/iBT) score of at least 550/80,
 - 3) IELTS score of at least 5.5
 - 4) Other English certification that is equal/similar to the above

Students in the program will participate in lectures and discussions in English, so the lack of English proficiency is a disqualifying condition for participation.

3. Grade Point Average (GPA)

- A student who has outstanding records and demonstrated strong personal character at their home institution, and has a minimum GPA of 2.30 from the previous academic year on the JASSO evaluation scale. If the previous year’s GPA is not available, students can calculate their GPA from the previous semester.

How to Calculate GPA

Use the table below to convert your grades into grade points. Then use your grade points and the formula below to calculate your GPA.

When calculating GPA, round off to tow decimal places. For example, 2.654 would be rounded 2.65, while 2.655 would be rounded to 2.66.

	Grade				
4-level rating	-	Excellent	Good	Average	Fail

(pattern 1)					
4-level rating (pattern 2)	-	A	B	C	F
4-level rating (pattern 3)	-	100-80	79-70	69-60	59-
5-level rating (pattern 4)	100-90	89-80	79-70	69-60	59-
5-level rating (pattern 5)	S	A	B	C	F
5-level rating (pattern 6)	A	B	C	D	F
Grade Points	3	3	2	1	0

GPA Formula:

$$\frac{([\text{No. of GP3 Credits}] \times 3) + ([\text{No. of GP2 Credits}] \times 2) + ([\text{No. of GP1 Credits}] \times 1) + ([\text{No. of GP0 Credits}] \times 0)}{\text{Total Number of Registered Credits}}$$

Total Number of Registered Credits

*No. =Number

*GP =Grade Point

<Note>

*If you have taken courses that are not part of the credit system, replace the number of credits in the GPA formula with the number of courses taken.

*Please clearly write your GPA on the application form.

4. Costs required

Participation fee

Participation fee of USD 150 is required. This covers: accommodation fee during Spring School, transportation fee from airport/dormitory, during field trip, breakfast & lunch during your stay, welcome & farewell reception, school materials and test kit.

Other cost required

Travel cost to/from Host University

Travel insurance fee

Other personal expenses

PARE Spring School course and credits information:

	Subject Name	Credits at HU
PARE Spring School	[Field Work Training I for PARE]	2 Credits
	[Seminar I for PARE]	1 Credit

*Students at Consortium University will be given corresponding number of credits at each institution accordingly.

Application Procedure

1. Download application forms from our website (<https://pare.oia.hokudai.ac.jp/>).
2. Submit the following documents to your PARE program Liaison Office at your institution.
 - Form 1: Application Form for PARE Program
 - Certification of English Proficiency test (if any) (copy)
 - Form 2: Study Plan (1)
 - Form 3: Self-assessment sheet
 - Official Undergraduate and Graduate Transcript (Original)
 - Student Card (Copy) or Certificate of Enrollment issued by home institution (Original)
 - Photocopy of passport (copy)
 - Photo (3X4cm, Color & Clear, taken within latest six months) X 1

Application Schedule

	2020 PARE Program Spring School Admission	Admission Notification
Application Period	November 15, 2019	End of November – Beginning of December 2020

Central Office for PARE Program in Hokkaido University

Program Coordinator: Junko YOSHIDA (Ms.)
Administrative Assistant: Yumi MORI (Ms.)

Address:

PARE Central Office
Student Exchange Division
Academic Affairs Department
Hokkaido University
Kita 15, Nishi 8, Kita-ku, Sapporo
Hokkaido, 060-0815, Japan

Phone: +81-(0)-11-706-8013/8014
Fax: +81-(0)-11-706-8036

E-mail: pare@oia.hokudai.ac.jp
Homepage: <https://pare.oia.hokudai.ac.jp/en/>



PARE Consortium

- Chulalongkorn University (Thailand)
- Hokkaido University (Japan)
- Institut Pertanian Bogor (Indonesia)
- Institut Teknologi Bandung (Indonesia)
- Kasetsart University (Thailand)
- Mahidol University (Thailand)
- Thammasat University (Thailand)
- Universitas Gadjah Mada (Indonesia)

